

Legend

The legend is organized into three horizontal rows. The first row shows symbols for various cymbals: Crash 1 (marked with an 'x'), Crash 2 (marked with a circled 'x'), China (marked with a star), Closed Hi Hat (marked with an 'x'), Half Open Hi Hat (marked with an 'o'), and Open Hi Hat (marked with an 'x'). The second row shows symbols for other percussion instruments: Ride (marked with an 'x'), Bell of Ride (marked with a triangle), Tom 1 and Tom 2 (marked with solid dots), Snare (marked with a solid dot), Floor Tom (marked with a solid dot), Bass Drum (marked with a solid dot), and Tambourine (marked with a circle containing a star). The third row shows section markers in rounded rectangles: Intro, V, C, T, Bridge, Solo, and Outro. Below these markers is a timeline with seven segments, each containing a small black rectangle. The segments are labeled: Beginning, Verse, Chorus, Turn Around, Bridge, Guitar Solo, and Ending.

Crash 1	Crash 2	China	Closed Hi Hat	Half Open Hi Hat	Open Hi Hat						
Ride	Bell of Ride	Tom 1	Tom 2	Snare	Floor Tom	Bass Drum	Tambourine				
Intro	V	C	T	Bridge	Solo	Outro					
Beginning	Verse	Chorus	Turn Around	Bridge	Guitar Solo	Ending					

Everything I Shouldn't Be Thinking About

♩ = 115

Thompson Square

Rich Redmond

Intro

Half Open H.H.

Musical notation for the Intro section, featuring a half-open hi-hat pattern. The notation consists of a single staff with a 4/4 time signature. The rhythm is a steady eighth-note pattern with a half-open hi-hat (indicated by an 'x' on the hi-hat line) and a snare drum on the second and fourth beats. The bass line consists of eighth notes on the G, A, and B strings.

V1

Closed H.H.

Musical notation for the V1 section, featuring a closed hi-hat pattern. The notation consists of a single staff with a 4/4 time signature. The rhythm is a steady eighth-note pattern with a closed hi-hat (indicated by a solid line on the hi-hat line) and a snare drum on the second and fourth beats. The bass line consists of eighth notes on the G, A, and B strings.

Musical notation for the V1 section, featuring a closed hi-hat pattern. The notation consists of a single staff with a 4/4 time signature. The rhythm is a steady eighth-note pattern with a closed hi-hat (indicated by a solid line on the hi-hat line) and a snare drum on the second and fourth beats. The bass line consists of eighth notes on the G, A, and B strings.

C1

Half Open H.H.

Musical notation for the C1 section, featuring a half-open hi-hat pattern. The notation consists of a single staff with a 4/4 time signature. The rhythm is a steady eighth-note pattern with a half-open hi-hat (indicated by an 'x' on the hi-hat line) and a snare drum on the second and fourth beats. The bass line consists of eighth notes on the G, A, and B strings.

Musical notation for the C1 section, featuring a half-open hi-hat pattern. The notation consists of a single staff with a 4/4 time signature. The rhythm is a steady eighth-note pattern with a half-open hi-hat (indicated by an 'x' on the hi-hat line) and a snare drum on the second and fourth beats. The bass line consists of eighth notes on the G, A, and B strings.

T1 Half Open H.H.

Musical notation for the T1 section, featuring a half-open hi-hat pattern. The notation consists of a single staff with a 4/4 time signature. The rhythm is a steady eighth-note pattern with a half-open hi-hat (indicated by an 'x' on the hi-hat line) and a snare drum on the second and fourth beats. The bass line consists of eighth notes on the G, A, and B strings.

V2 Closed H.H.

Musical notation for the V2 section, featuring a closed hi-hat pattern. The notation consists of a single staff with a 4/4 time signature. The rhythm is a steady eighth-note pattern with a closed hi-hat (indicated by a solid line on the hi-hat line) and a snare drum on the second and fourth beats. The bass line consists of eighth notes on the G, A, and B strings.

Musical notation for the V2 section, featuring a closed hi-hat pattern. The notation consists of a single staff with a 4/4 time signature. The rhythm is a steady eighth-note pattern with a closed hi-hat (indicated by a solid line on the hi-hat line) and a snare drum on the second and fourth beats. The bass line consists of eighth notes on the G, A, and B strings.

C2 Half Open H.H.

Musical notation for the C2 section, featuring a half-open hi-hat pattern. The notation consists of a single staff with a 4/4 time signature. The rhythm is a steady eighth-note pattern with a half-open hi-hat (indicated by an 'x' on the hi-hat line) and a snare drum on the second and fourth beats. The bass line consists of eighth notes on the G, A, and B strings.

Musical notation for the C2 section, featuring a half-open hi-hat pattern. The notation consists of a single staff with a 4/4 time signature. The rhythm is a steady eighth-note pattern with a half-open hi-hat (indicated by an 'x' on the hi-hat line) and a snare drum on the second and fourth beats. The bass line consists of eighth notes on the G, A, and B strings.

Musical notation for the C2 section, featuring a half-open hi-hat pattern. The notation consists of a single staff with a 4/4 time signature. The rhythm is a steady eighth-note pattern with a half-open hi-hat (indicated by an 'x' on the hi-hat line) and a snare drum on the second and fourth beats. The bass line consists of eighth notes on the G, A, and B strings.

^

ppp

fff

Solo Open H.H.

C3 Closed H.H.

C4 Half Open H.H.

Outro Half Open H.H.

Here We Go Again

Thompson Square

Rich Redmond

♩ = 140

Intro

Half Open H.H.

V1 Closed H.H.

V2 Closed H.H.
Tambourine on 2

Add Snare On 2

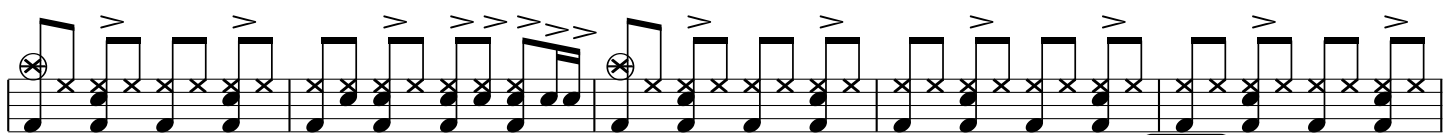
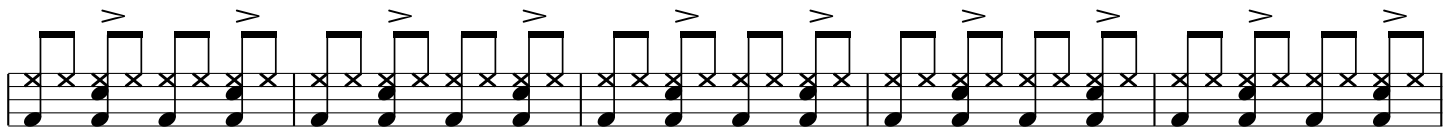
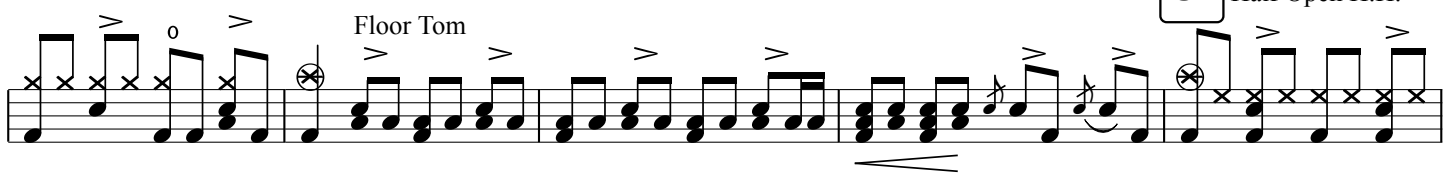
C1 Half Open H.H.

T1 Closed H.H.
Tambourine on 2

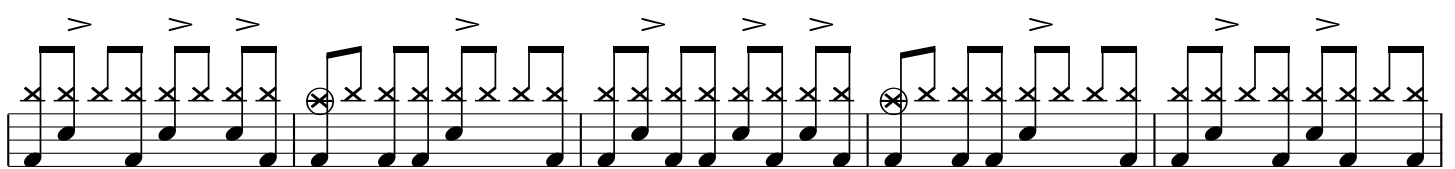
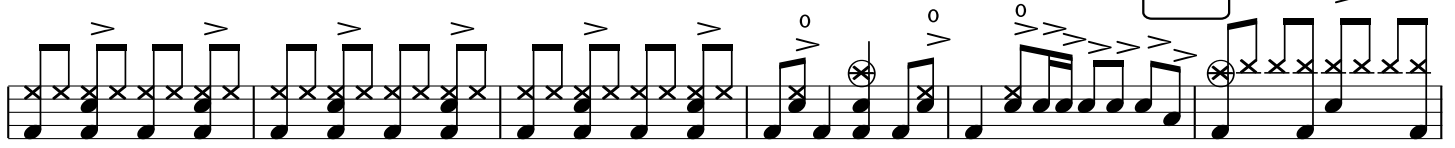
V3 Closed H.H.

C2 Half Open H.H.

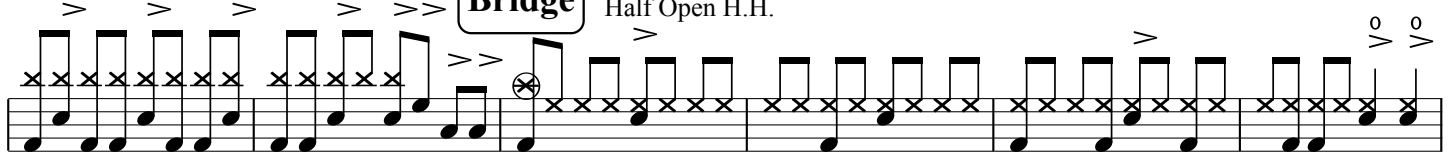
Floor Tom



Solo Crash

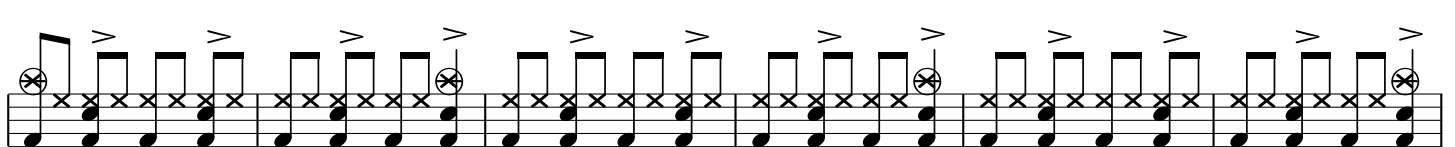
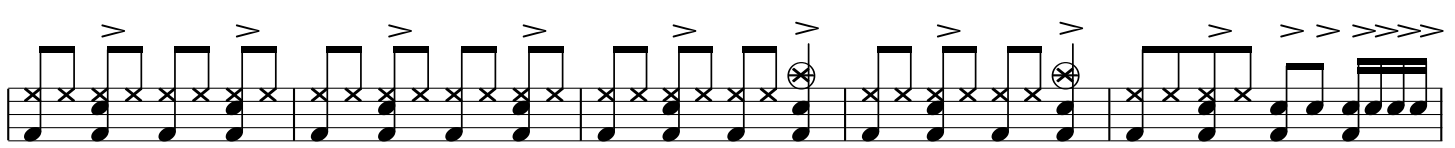
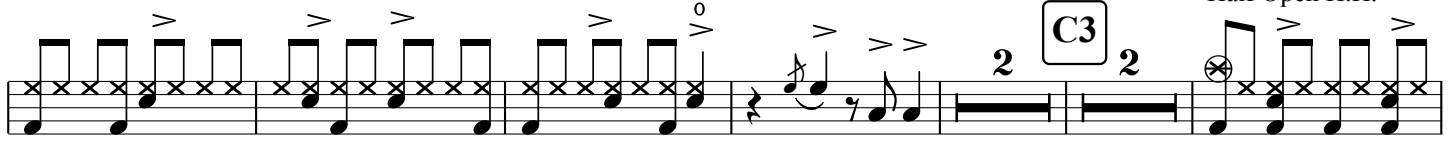


Bridge Half Open H.H.

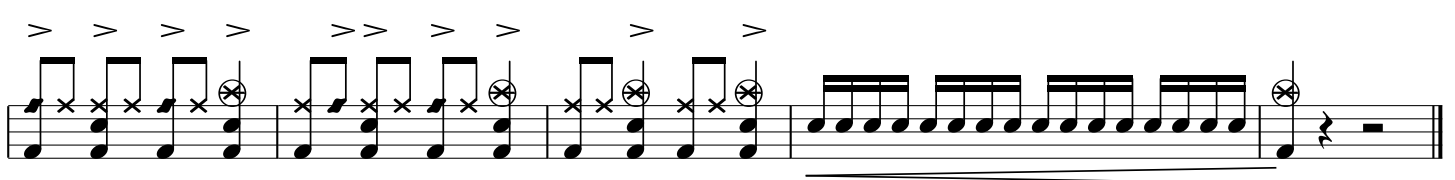
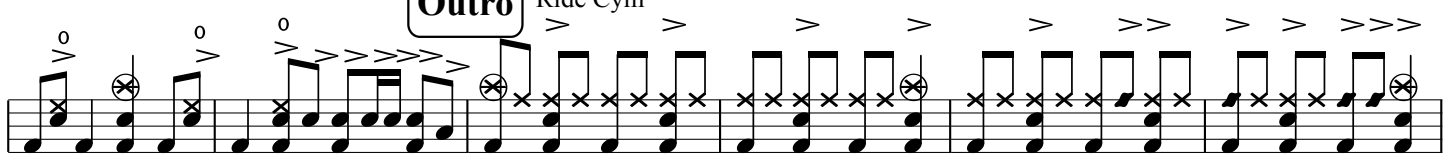


Half Open H.H.

C3



Outro Ride Cym



You Don't Get Lucky

Thompson Square

Rich Redmond

♩ = 87

Intro

Cym Swell

Closed H.H.

Musical notation for the first staff of the Intro section. It shows a 4/4 time signature with a treble clef. The notation includes a Cym Swell (indicated by a wavy line) and a Closed H.H. (Closed Hi-Hat) pattern consisting of eighth notes with 'x' marks above them. The pattern is marked with accents (>) and some notes have a circled 'o' above them.

Ride Cym

Musical notation for the second staff of the Intro section. It continues the pattern from the first staff, featuring a Ride Cym pattern (indicated by a circled 'o' above the notes) and a Closed H.H. pattern. The notation includes accents (>) and circled 'o' marks.

V1 Closed H.H.

Musical notation for the first staff of the V1 section. It features a Closed H.H. pattern with eighth notes, marked with accents (>) and circled 'o' marks.

Musical notation for the second staff of the V1 section. It continues the Closed H.H. pattern with eighth notes, marked with accents (>) and circled 'o' marks.

Straight Kick

Musical notation for the third staff of the V1 section. It features a Straight Kick pattern with eighth notes, marked with accents (>) and circled 'o' marks.

Musical notation for the fourth staff of the V1 section. It continues the Straight Kick pattern with eighth notes, marked with accents (>) and circled 'o' marks.

C1 Half Open H.H.

Musical notation for the first staff of the C1 section. It features a Half Open H.H. pattern with eighth notes, marked with accents (>) and circled 'o' marks.

T1 Ride Cym

Musical notation for the second staff of the C1 section. It features a Ride Cym pattern with eighth notes, marked with accents (>) and circled 'o' marks.

V2 Closed H.H.

Musical notation for the first staff of the V2 section. It features a Closed H.H. pattern with eighth notes, marked with accents (>) and circled 'o' marks.

Musical notation for the second staff of the V2 section. It continues the Closed H.H. pattern with eighth notes, marked with accents (>) and circled 'o' marks.

C2 Half Open H.H.

Musical notation for C2 Half Open H.H. featuring eighth notes with accents and a circled 'x' symbol.

Musical notation for C2 Half Open H.H. featuring eighth notes with accents and a circled 'x' symbol.

Solo Ride Cym

Musical notation for Solo Ride Cym featuring eighth notes with accents and a circled 'x' symbol.

C3 Ride Cym

Musical notation for C3 Ride Cym featuring eighth notes with accents and a circled 'x' symbol.

Crash

Musical notation for Crash featuring eighth notes with accents and a circled 'x' symbol.

Crash

Musical notation for Crash featuring eighth notes with accents and a circled 'x' symbol.

Outro Ride Cym

sfz *sfz* *sfz*

Musical notation for Outro Ride Cym featuring eighth notes with accents and a circled 'x' symbol, with *sfz* markings.

Musical notation for Vamp Closed H.H. featuring eighth notes with accents and a circled 'x' symbol.

Vamp Closed H.H.

Musical notation for Vamp Closed H.H. featuring eighth notes with accents and a circled 'x' symbol.

Musical notation for Vamp Closed H.H. featuring eighth notes with accents and a circled 'x' symbol.

That's So Me And You

Thompson Square

Rich Redmond

♩ = 80

Intro Shaker

Shaker

Drumset

V1 Shaker

Cym Roll

C1

Toms

T1

V2

Toms

C2

Musical notation for section C2. The top staff shows a drum part with a cymbal and a bass line with eighth notes. The bottom staff shows a bass line with eighth notes and a melodic line with eighth notes. A 'Toms' label is present above the first measure of the bottom staff.

T2

Musical notation for section T2. The top staff shows a drum part with a cymbal and a bass line with eighth notes. The bottom staff shows a bass line with eighth notes and a melodic line with eighth notes. A 'Toms' label is present above the fifth measure of the bottom staff.

Bridge

Musical notation for the Bridge section. The top staff shows a drum part with a cymbal and a bass line with eighth notes. The bottom staff shows a bass line with eighth notes and a melodic line with eighth notes. An 'Add Snare' label is present above the fifth measure of the bottom staff.

C3

Musical notation for section C3. The top staff shows a drum part with a cymbal and a bass line with eighth notes. The bottom staff shows a bass line with eighth notes and a melodic line with eighth notes. A '2' label is present above the last measure of the bottom staff.

C4

Musical notation for section C4. The top staff shows a drum part with a cymbal and a bass line with eighth notes. The bottom staff shows a bass line with eighth notes and a melodic line with eighth notes. A 'Toms' label is present above the first measure of the bottom staff.

Outro

Musical notation for the Outro section. The top staff shows a drum part with a cymbal and a bass line with eighth notes. The bottom staff shows a bass line with eighth notes and a melodic line with eighth notes. A 'Toms' label is present above the last measure of the bottom staff.

6

Musical notation for the end of the piece. The top staff shows a drum part with a cymbal and a bass line with eighth notes. The bottom staff shows a bass line with eighth notes and a melodic line with eighth notes. A '6' label is present above the last measure of the bottom staff.

I Can't Outrun You

Thompson Square

Rich Redmond

♩ = 76

Intro

V1

V2

Shaker

Musical notation for the Intro section. It begins with a 3-measure rest in 3/4 time. This is followed by a series of rhythmic patterns consisting of eighth notes with accents, some marked with 'x' to indicate shaker use. The notation includes dynamic markings like '>' and '<>'.

C1 Toms

Musical notation for the C1 section, labeled 'Toms'. It consists of a dense, continuous pattern of eighth notes in 4/4 time, representing a tom pattern.

T1

v3

Musical notation for the T1 and v3 sections. It starts with a 3-measure rest in 3/4 time, followed by a melodic line of eighth notes with accents. The notation includes dynamic markings like '>' and '<>'.

Bridge

Musical notation for the Bridge section. It features a melodic line of eighth notes with accents in 4/4 time. The notation includes dynamic markings like '>' and '<>'.

Solo

Crash

Musical notation for the Solo section. It features a melodic line of eighth notes with accents in 4/4 time, with 'x' marks indicating crash cymbal use. The notation includes dynamic markings like '>' and '<>'.

Outro

Shaker

Musical notation for the Outro section. It features a rhythmic pattern of eighth notes with accents in 3/4 time, with 'x' marks indicating shaker use. The notation includes dynamic markings like '>' and '<>'.

Testing The Water

♩ = 70

Thompson Square

Rich Redmond

Intro Half Open H.H.

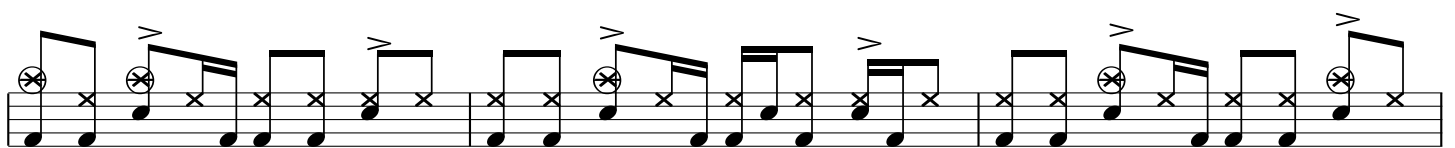
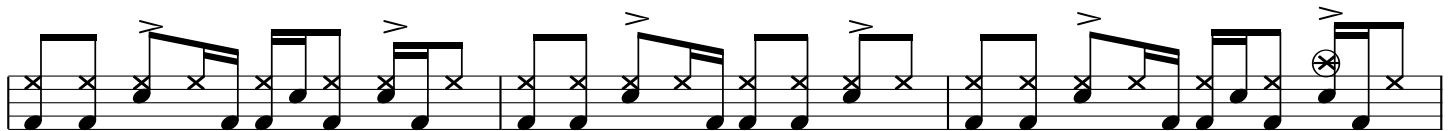
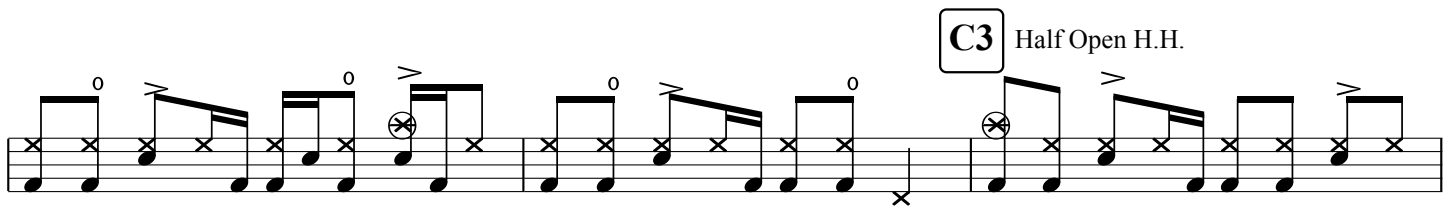
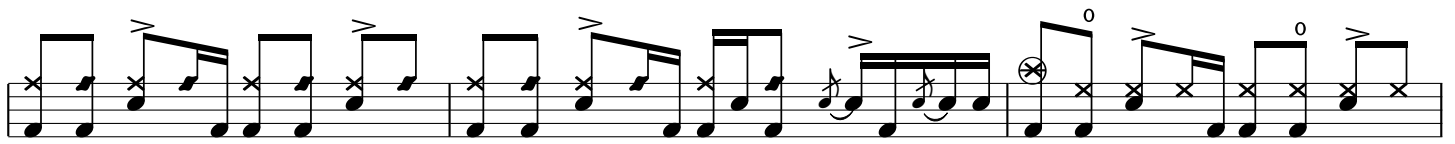
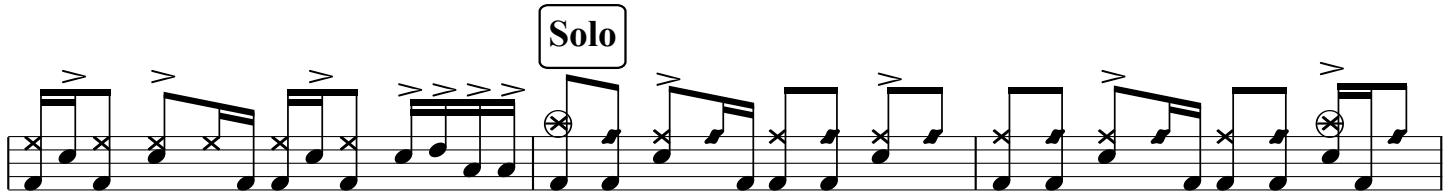
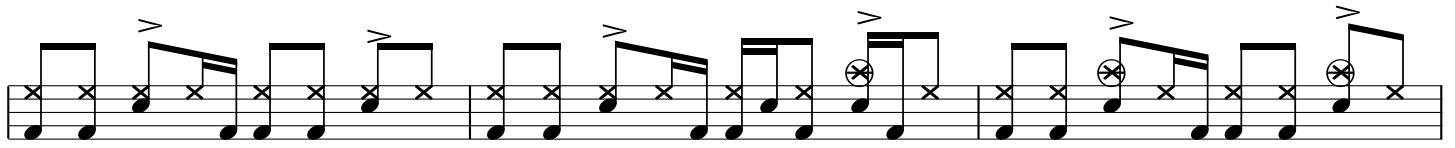
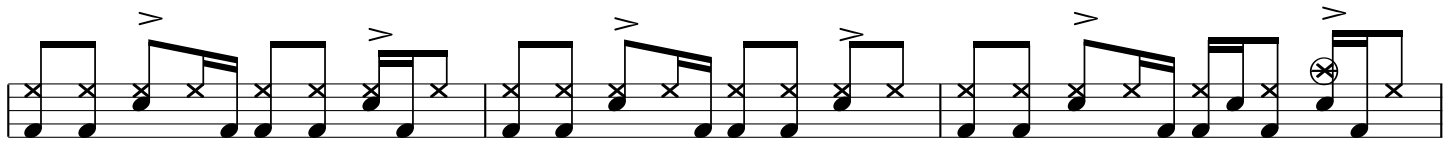
V1 Closed H.H.

C1 Half Open H.H.

T1 Half Open H.H.

V2 Closed H.H.

C2 Half Open H.H.



For The Life Of Me

Thompson Square

Rich Redmond

♩ = 75

Intro

Ride Cym.

V1

Closed H.H.

Half Open H.H.

C1

Ride Cym.

T1

Ride Cym.

V2

Closed H.H.

Half Open H.H.

C2

Ride Cym.

Bridge

Half Open H.H.

Solo

Ride Cym.

Crash

C3

Ride Cym.

Outro

Ride Cym.

If I Didn't Have You

Thompson Square

Rich Redmond

♩ = 74

Intro

Drum Set

Drum Loop

V1

C1 Half Open H.H.

Ride Cym

T1 Half Open H.H.

V2 Closed H.H.

Detailed description: This page contains the drum set notation for the Intro of the song 'If I Didn't Have You' by Thompson Square. The music is in 4/4 time with a tempo of 74 beats per minute. The notation is organized into two systems, each with a 'Drum Set' staff (top) and a 'Drum Loop' staff (bottom). The first system includes a 'V1' section. The second system includes 'C1 Half Open H.H.', 'Ride Cym', 'T1 Half Open H.H.', and 'V2 Closed H.H.' sections. The notation uses various symbols: 'x' for snare, 'o' for hi-hat, and '⊗' for tom. Accents (>) are used for many notes. The 'Drum Set' staff shows rests and dynamic markings like 'ff' and 'fz'. The 'Drum Loop' staff shows rhythmic patterns with stems and flags.

C2 Half Open H.H.

Musical notation for the C2 section, featuring a series of eighth notes with accents and some notes marked with a circled 'X' on a five-line staff. The notes are primarily eighth notes and quarter notes, with some beamed eighth notes. The bottom staff shows a series of vertical tick marks indicating the drum hits.

Ride Cym

Musical notation for the Ride Cym section, featuring a series of eighth notes with accents and some notes marked with a circled 'X' on a five-line staff. The notes are primarily eighth notes and quarter notes, with some beamed eighth notes. The bottom staff shows a series of vertical tick marks indicating the drum hits.

C3

Musical notation for the C3 section, featuring a series of eighth notes with accents and some notes marked with a circled 'X' on a five-line staff. The notes are primarily eighth notes and quarter notes, with some beamed eighth notes. The bottom staff shows a series of vertical tick marks indicating the drum hits. The section ends with a double bar line and a change in time signature to 2/4 and 4/4.

Half Open H.H.

Musical notation for the Half Open H.H. section, featuring a series of eighth notes with accents and some notes marked with a circled 'X' on a five-line staff. The notes are primarily eighth notes and quarter notes, with some beamed eighth notes. The bottom staff shows a series of vertical tick marks indicating the drum hits.

Outro Half Open H.H.

Musical notation for the Outro Half Open H.H. section, featuring a series of eighth notes with accents and some notes marked with a circled 'X' on a five-line staff. The notes are primarily eighth notes and quarter notes, with some beamed eighth notes. The bottom staff shows a series of vertical tick marks indicating the drum hits.

Musical notation for the final section, featuring a series of eighth notes with accents and some notes marked with a circled 'X' on a five-line staff. The notes are primarily eighth notes and quarter notes, with some beamed eighth notes. The bottom staff shows a series of vertical tick marks indicating the drum hits.

Here's To Being Here

Thompson Square

Rich Redmond

♩ = 132

Intro

Half Open H.H.

Musical notation for the Intro section, featuring a half-open hi-hat pattern. The notation is on a single staff in 4/4 time, starting with a quarter rest followed by a quarter note. The hi-hat pattern consists of eighth notes with 'x' marks above them, indicating a half-open hi-hat sound. There are two circled 'x' marks with a diagonal slash through them, indicating specific hi-hat sounds.

V1 Closed H.H.

Musical notation for the V1 section, featuring a closed hi-hat pattern. The notation is on a single staff in 4/4 time, consisting of eighth notes with 'x' marks above them, indicating a closed hi-hat sound.

Musical notation for the V1 section, featuring a closed hi-hat pattern. The notation is on a single staff in 4/4 time, consisting of eighth notes with 'x' marks above them, indicating a closed hi-hat sound.

Musical notation for the V1 section, featuring a closed hi-hat pattern. The notation is on a single staff in 4/4 time, consisting of eighth notes with 'x' marks above them, indicating a closed hi-hat sound.

C1 Half Open H.H.

Musical notation for the C1 section, featuring a half-open hi-hat pattern. The notation is on a single staff in 4/4 time, consisting of eighth notes with 'x' marks above them, indicating a half-open hi-hat sound.

Musical notation for the C1 section, featuring a half-open hi-hat pattern. The notation is on a single staff in 4/4 time, consisting of eighth notes with 'x' marks above them, indicating a half-open hi-hat sound.

Musical notation for the C1 section, featuring a half-open hi-hat pattern. The notation is on a single staff in 4/4 time, consisting of eighth notes with 'x' marks above them, indicating a half-open hi-hat sound.

T1 Closed H.H.

Musical notation for the T1 section, featuring a closed hi-hat pattern. The notation is on a single staff in 4/4 time, consisting of eighth notes with 'x' marks above them, indicating a closed hi-hat sound.

V2 Closed H.H.

Musical notation for the V2 section, featuring a closed hi-hat pattern. The notation is on a single staff in 4/4 time, consisting of eighth notes with 'x' marks above them, indicating a closed hi-hat sound.

Musical notation for the V2 section, featuring a closed hi-hat pattern. The notation is on a single staff in 4/4 time, consisting of eighth notes with 'x' marks above them, indicating a closed hi-hat sound.

C2 Half Open H.H.

Solo Ride Cym

Bridge Closed H.H.

C3 Closed H.H.

Half Open H.H.

Outro Ride Cym

Just Feels Good

Thompson Square

Rich Redmond

♩ = 74

Intro

Closed H.H.

The Intro section consists of two staves. The top staff is labeled 'Drum Kit' and the bottom staff is labeled 'Drum Loop'. Both are in 4/4 time. The Drum Kit part features a series of eighth notes with accents and some notes with a circled 'o' above them. The Drum Loop part features a consistent eighth-note pattern.

V1

Closed H.H.

The V1 section consists of two staves. The top staff is labeled 'Drum Kit' and the bottom staff is labeled 'Drum Loop'. Both are in 4/4 time. The Drum Kit part features a series of eighth notes with accents and some notes with a circled 'o' above them. The Drum Loop part features a consistent eighth-note pattern.

C1

Half Open H.H.

The C1 section consists of two staves. The top staff is labeled 'Drum Kit' and the bottom staff is labeled 'Drum Loop'. Both are in 4/4 time. The Drum Kit part features a series of eighth notes with accents and some notes with a circled 'o' above them. The Drum Loop part features a consistent eighth-note pattern.

V2

Closed H.H.

The V2 section consists of two staves. The top staff is labeled 'Drum Kit' and the bottom staff is labeled 'Drum Loop'. Both are in 4/4 time. The Drum Kit part features a series of eighth notes with accents and some notes with a circled 'o' above them. The Drum Loop part features a consistent eighth-note pattern.

C2

Half Open H.H.

The C2 section consists of two staves. The top staff is labeled 'Drum Kit' and the bottom staff is labeled 'Drum Loop'. Both are in 4/4 time. The Drum Kit part features a series of eighth notes with accents and some notes with a circled 'o' above them. The Drum Loop part features a consistent eighth-note pattern.

Musical notation for the first system, featuring a single staff with rhythmic patterns and accents.

Solo Ride Cym

Musical notation for the second system, including a 'Solo' section with 'Ride Cym' and triplets.

C3 Half Open H.H.

Musical notation for the third system, including a 'C3' section with 'Half Open H.H.' and various rhythmic patterns.

Musical notation for the fourth system, featuring a single staff with rhythmic patterns and accents.

Ride Cym

Outro Closed H.H.

Musical notation for the fifth system, including 'Ride Cym' and 'Outro' sections with 'Closed H.H.' and triplets.

Musical notation for the sixth system, featuring a single staff with rhythmic patterns and accents.

Maybe It's You

Thompson Square

Rich Redmond

♩ = 78

Intro

Toms

2

C1 Half Open H.H.

⊗

⊗

T1 Toms

⊗

V2 Closed H.H.

(

C2 Half Open H.H.

⊗

⊗

T2 Toms

Musical notation for the first staff of the T2 Toms section. It features a series of eighth notes on a five-line staff, with 'x' marks above the notes indicating muted strings. The notes are grouped in pairs, with accents (>) above each note. A circled 'x' symbol is placed above the eighth note in the fifth measure.

Musical notation for the second staff of the T2 Toms section. It continues the eighth-note pattern with accents and 'x' marks. A circled 'x' symbol is placed above the eighth note in the eighth measure.

Bridge Ride Cym

Musical notation for the first staff of the Bridge Ride Cym section. It features eighth notes with 'x' marks above them. A circled 'x' symbol is placed above the eighth note in the first measure. The staff ends with a double bar line and a fermata-like symbol.

C3 Half Open H.H.

Musical notation for the first staff of the C3 Half Open H.H. section. It features eighth notes with accents and 'x' marks. A circled 'x' symbol is placed above the eighth note in the fourth measure.

Musical notation for the second staff of the C3 Half Open H.H. section. It continues the eighth-note pattern with accents and 'x' marks. A circled 'x' symbol is placed above the eighth note in the fifth measure.

Musical notation for the third staff of the C3 Half Open H.H. section. It continues the eighth-note pattern with accents and 'x' marks. A circled 'x' symbol is placed above the eighth note in the eighth measure.

Outro Toms

Musical notation for the first staff of the Outro Toms section. It features eighth notes with accents and 'x' marks. A circled 'x' symbol is placed above the eighth note in the first measure.

Musical notation for the second staff of the Outro Toms section. It continues the eighth-note pattern with accents and 'x' marks. A circled 'x' symbol is placed above the eighth note in the fourth measure.

Musical notation for the third staff of the Outro Toms section. It continues the eighth-note pattern with accents and 'x' marks. A circled 'x' symbol is placed above the eighth note in the first measure.

Run

Thompson Square

Rich Redmond

♩ = 86

Intro

V1

Closed H.H.

Floor Tom

Musical notation for the first staff of the Intro section, measures 4 and 6. It features a 4/4 time signature and includes notes with accents and 'x' marks on the staff.

C1

Half Open H.H.

Musical notation for the second staff of the Intro section, measures 7-8. It continues the rhythmic pattern with notes and accents.

Musical notation for the third staff of the Intro section, measures 9-10. It continues the rhythmic pattern with notes and accents.

V2

5

Floor Tom

Musical notation for the first staff of the V2 section, measures 11-12. It features a 5-measure rest followed by notes and accents.

C2

Half Open H.H.

Musical notation for the second staff of the V2 section, measures 13-14. It continues the rhythmic pattern with notes and accents.

Musical notation for the third staff of the V2 section, measures 15-16. It continues the rhythmic pattern with notes and accents.

Bridge

Ride Cym

Musical notation for the first staff of the Bridge section, measures 17-18. It features notes with accents and 'x' marks.

C3

Musical notation for the second staff of the Bridge section, measures 19-20. It continues the rhythmic pattern with notes and accents.

Half Open H.H.

Musical notation for the third staff of the Bridge section, measures 21-22. It continues the rhythmic pattern with notes and accents.

Ride Cym

Musical notation for the fourth staff of the Bridge section, measures 23-24. It concludes the piece with notes, accents, and rests.

Home Is You

Thompson Square

Rich Redmond

♩ = 80

Intro Closed H.H.

Musical notation for the Intro section, featuring a 4/4 time signature and a series of eighth notes with accents and 'x' marks.

V1 Closed H.H.

Musical notation for the V1 section, continuing the eighth note pattern with accents and 'x' marks.

Musical notation for the first part of the C1 section, featuring eighth notes with accents and 'x' marks.

C1 Closed H.H.

Musical notation for the second part of the C1 section, featuring eighth notes with accents and 'x' marks.

Musical notation for the first part of the V2 section, featuring eighth notes with accents and 'x' marks.

V2 Closed H.H.

Musical notation for the second part of the V2 section, including a 4-measure rest.

Musical notation for the first part of the C2 section, featuring eighth notes with accents and 'x' marks.

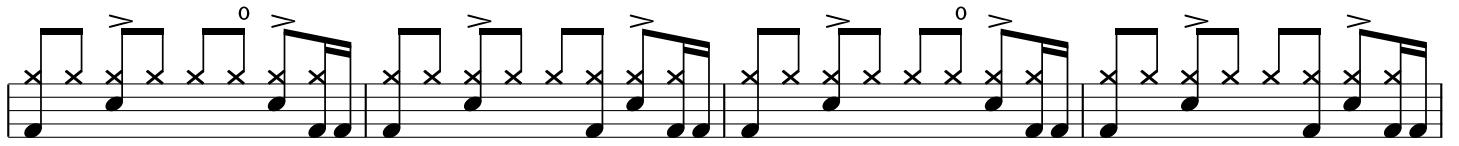
C2 Closed H.H.

Musical notation for the second part of the C2 section, featuring eighth notes with accents and 'x' marks.

Musical notation for the first part of the T1 section, featuring eighth notes with accents and 'x' marks.

T1 Closed H.H.

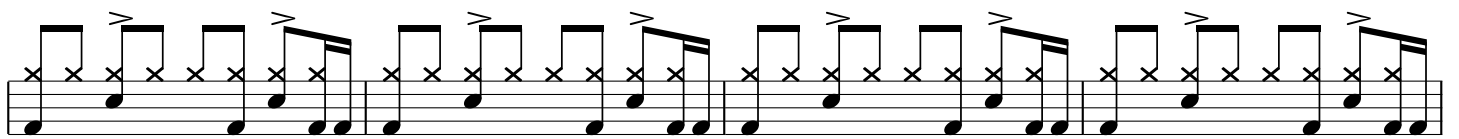
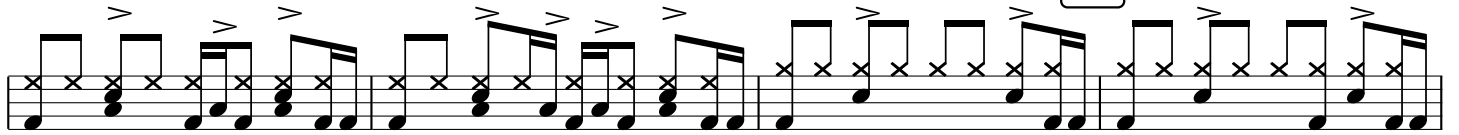
Musical notation for the second part of the T1 section, featuring eighth notes with accents and 'x' marks.



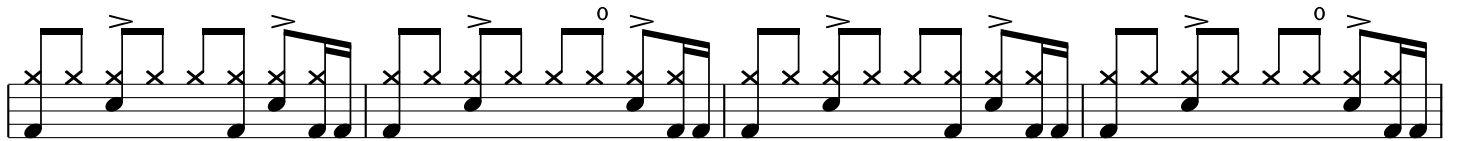
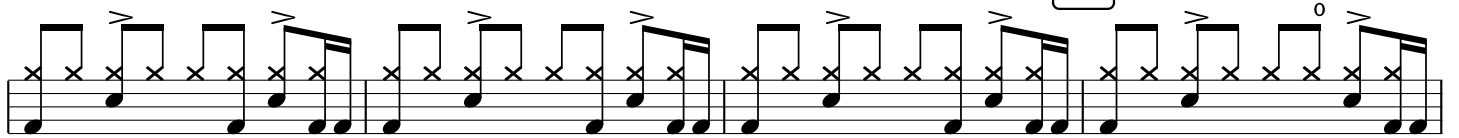
Bridge Half Open H.H.



C3 Closed H.H.



T2 Closed H.H.



Outro Closed H.H.

